

Radiation-induced undifferentiated spindle cell sarcoma following high-dose-rate interstitial brachytherapy for tongue squamous cell carcinoma

Yuka Uchimoto, DDS¹, Hiroaki Shimamoto, DDS, PhD^{1,2}, Ami Takeshita, DDS¹, Kaori Oya, DDS, PhD³, Mitsunobu Kishino, DDS, PhD³, Yasuo Fukuda, DDS, PhD³, Satoru Toyosawa, DDS, PhD⁴, Michio Oda, RT⁵, Kazuhiko Ogawa, MD, PhD², Sven Kreiborg, DDS, PhD^{6,7}, Sanjay M. Mallya, BDS, MDS, PhD⁸, Shumei Murakami, DDS, PhD^{1,2}

¹Department of Oral and Maxillofacial Radiology, Osaka University Graduate School of Dentistry, Osaka, Japan, ²Department of Radiation Oncology, Osaka University Graduate School of Medicine, Osaka, Japan, ³Clinical Laboratory, Osaka University Dental Hospital, Osaka, Japan, ⁴Department of Oral Pathology, Osaka University Graduate School of Dentistry, Osaka, Japan, ⁵Department of Medical Technology, Osaka University Hospital, Osaka, Japan, ⁶Department of Pediatric Dentistry and Clinical Genetics, School of Dentistry, Faculty of Health and Medical Sciences, University of Copenhagen, Copenhagen, Denmark, ⁷3D Craniofacial Image Research Laboratory (School of Dentistry, University of Copenhagen; Centre of Head and Orthopedics, Copenhagen University Hospital Rigshospitalet; and Department of Applied Mathematics and Computer Science, Technical University of Denmark), Copenhagen, Denmark, ⁸Section of Oral and Maxillofacial Radiology, UCLA School of Dentistry, Los Angeles, USA

Abstract

High-dose-rate interstitial brachytherapy (HDR-ISBT) has recently come to be considered one of the most effective treatments for oral cancer. On the other hand, it is important to note that radiation therapy has some side effects. Especially, radiation-induced malignancy is probably the most serious complication affecting long-term survivors. We report a case of a radiation-induced undifferentiated spindle cell sarcoma that developed following HDR-ISBT for tongue squamous cell carcinoma (SCC). A 39-year-old woman with right tongue SCC underwent HDR-ISBT (60 Gy, 10 fractions, 8 days) treatment. Five years and one month later, a tumor had developed at the primary site. Surgery was performed for the tumor, which was histopathologically diagnosed as an undifferentiated spindle cell sarcoma. That was distinct from the squamous cell origin of the primary cancer. According to recently established criteria for radiation-induced malignancy, this case was classified as a radiation-induced sarcoma. A search of the literature revealed no previous report of radiation-induced malignancy following HDR-ISBT for tongue cancer.

J Contemp Brachytherapy 2022; 14, 3: 268-272

DOI: <https://doi.org/10.5114/jcb.2022.116149>

Key words: radiation-induced, sarcoma, brachytherapy, tongue.

Purpose

Among oral cancers, tongue cancer is most prevalent, with histopathological findings showing squamous cell carcinoma (SCC) to be responsible for 90% of these cancers. While surgical resection is considered to be the standard treatment for tongue cancer [1], radiation therapy may be utilized in some cases because of its advantages regarding the preservation of function and morphology. Previous studies have noted three-year local control rates following interstitial brachytherapy (ISBT) for tongue cancer of 82-84% [2, 3]. Both low-dose-rate ISBT (LDR-ISBT) and high-dose-rate ISBT (HDR-ISBT) are available. The advantages of LDR-ISBT include its simplicity, low level of anesthesia required, and low cost of the apparatus. Among its disadvantages are the opera-

tor cannot avoid being exposed to radiation, a shielded room is required for long-term patient irradiation, and dose distribution cannot be changed. HDR-ISBT overcomes these disadvantages, with irradiation time of only a few minutes, and it has recently come to be considered one of the most effective treatments for oral cancer [3]. It is important to note that radiation therapy has some side effects. Those occurring early during irradiation for oral cancer treatment include stomatitis and taste disorders, while late side effects include soft-tissue ulcers and osteonecrosis [4]. However, radiation-induced malignancy is probably the most serious complication affecting long-term survivors [5]. There is no consensus definition of radiation-induced malignancy, but the most important point is to distinguish it from recurrence. Therefore, the

Address for correspondence: Hiroaki Shimamoto, DDS, PhD, Department of Oral and Maxillofacial Radiology, Osaka University Graduate School of Dentistry, 1-8 Yamadaoka, Suita, Osaka, 565-0871, Japan, phone: +81-6-6879-2967, fax: +81-6-6879-2970, e-mail: h-shima@dent.osaka-u.ac.jp

Received: 08.03.2022

Accepted: 25.04.2022

Published: 11.05.2022

minimum requirement for diagnosis is a long period between the initial treatment and the occurrence of a new malignancy, and recently presented criteria include a latency period of several years [6, 7]. Furthermore, if a histopathological finding of a new malignancy is different from previous initial cancer, it is considered to be a radiation-induced malignancy [8]. Several reports of radiation-induced malignancy due to external beam radiation have been presented [9], while there are few reported cases following brachytherapy [10]. A search of the literature revealed no previous report of radiation-induced malignancy following HDR-ISBT for tongue cancer. The purpose of this study was to document information of a patient with tongue SCC, who was successfully treated with radiation therapy, but developed a radiation-induced undifferentiated spindle cell sarcoma of the tongue five years and one month later. Furthermore, a pseudo-tumor developed between the time of radiation exposure and the development of undifferentiated spindle cell sarcoma.

Case report

A 39-year-old woman visited our hospital with pain on the right side of her tongue. A clinical photograph showing a reddish irregular mass lesion in the right lateral border of tongue is presented in Figure 1, while T2-weighted magnetic resonance imaging (MRI) results showing a tumor sized $24 \times 14 \times 22$ mm at the right lateral border of tongue (yellow arrows) are presented in Figure 2. Based on the biopsy and imaging results, the patient was diagnosed with SCC (cT3N0M0, stage III). A computed tomography (CT) scan was acquired, and a three-dimensional treatment plan was performed using Oncentra Brachy (Elekta AB, Stockholm, Sweden). The contour of clinical target volume (CTV) was identified using CT images. Planning target volume (PTV) was defined as an equivalent to CTV. We delivered 6 Gy as D_{100} , i.e., minimum dose of the prescribed dose that was given to 100% of PTV. The patient underwent HDR-ISBT (60 Gy, 10 fractions, 10 flexible applicator tubes, double-plane) for 8 days, performed on the right side of the tongue (Figure 3).

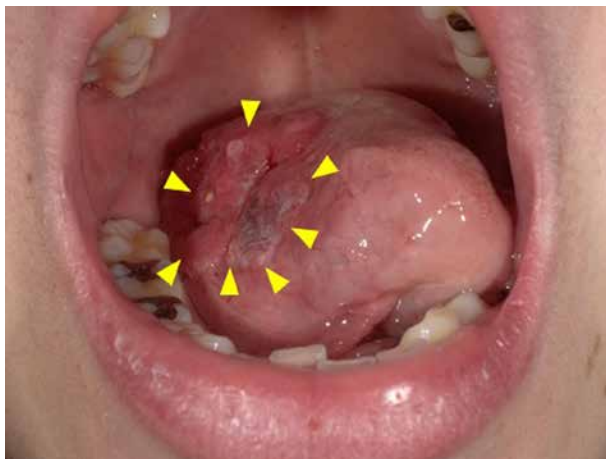


Fig. 1. Pre-treatment clinical photograph

During follow-up, the patient noticed a mass lesion in the right side of the floor of the mouth three years and one month after the completion of therapy (Figure 4). An elevated lesion on the right side of the floor of the mouth was resected five months later, and based on surgical specimen, it was histopathologically diagnosed as high-grade dysplasia of the mucosa with suspicion of reactive hyperplasia. The tumor consisted of spindle-shaped atypical cells without malignancy (Figure 5). It was thought that the tumor was a reactive granulation containing atypical stromal cells caused by radiation, since the patient had a history of radiation. The lesion was small and superficial, with no apparent invasion into deeper muscle layers, and the shape was outwardly protruding.

After five years and one month of follow-up after radiation therapy, re-growth of a lesion with induration on the right lateral border of tongue was observed (Figures 6 and 7). A total glossectomy, rectus abdominis muscle flap reconstruction, partial mandibulectomy, scapular reconstruction, and bilateral radical neck dissection were performed. The histopathological diagnosis was an undifferentiated spindle cell sarcoma (T4aN0M0) (Figure 8). One year and ten months after the surgery, there was no obvious recurrence or metastasis (Figure 9).

Discussion

According to criteria for radiation-induced malignancy presented by Sakai *et al.* [8], such induced cancer can be classified into three groups (A, B, and C) based on the histopathology, organ of origin, latency period, and irradiation field (Table 1). This classification is based on a definition of multiple primary malignancies presented by Warren and Gates [11]. This definition is considered

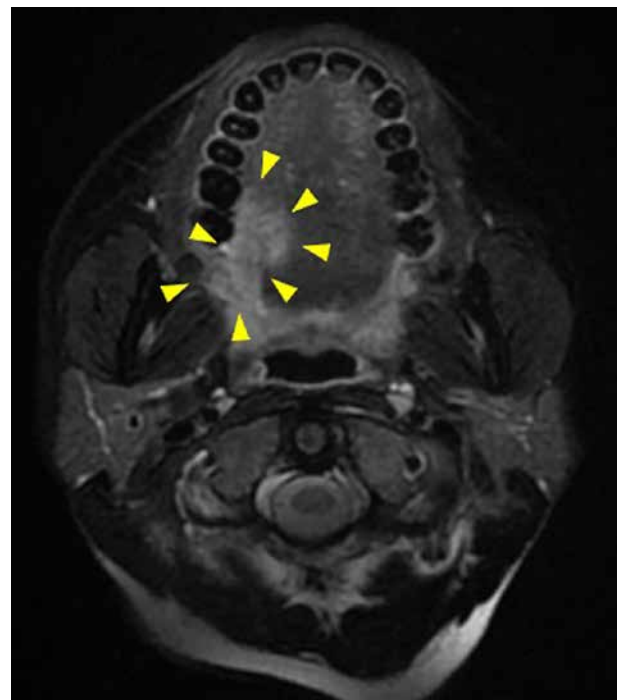


Fig. 2. Pre-treatment T2-weighted magnetic resonance image

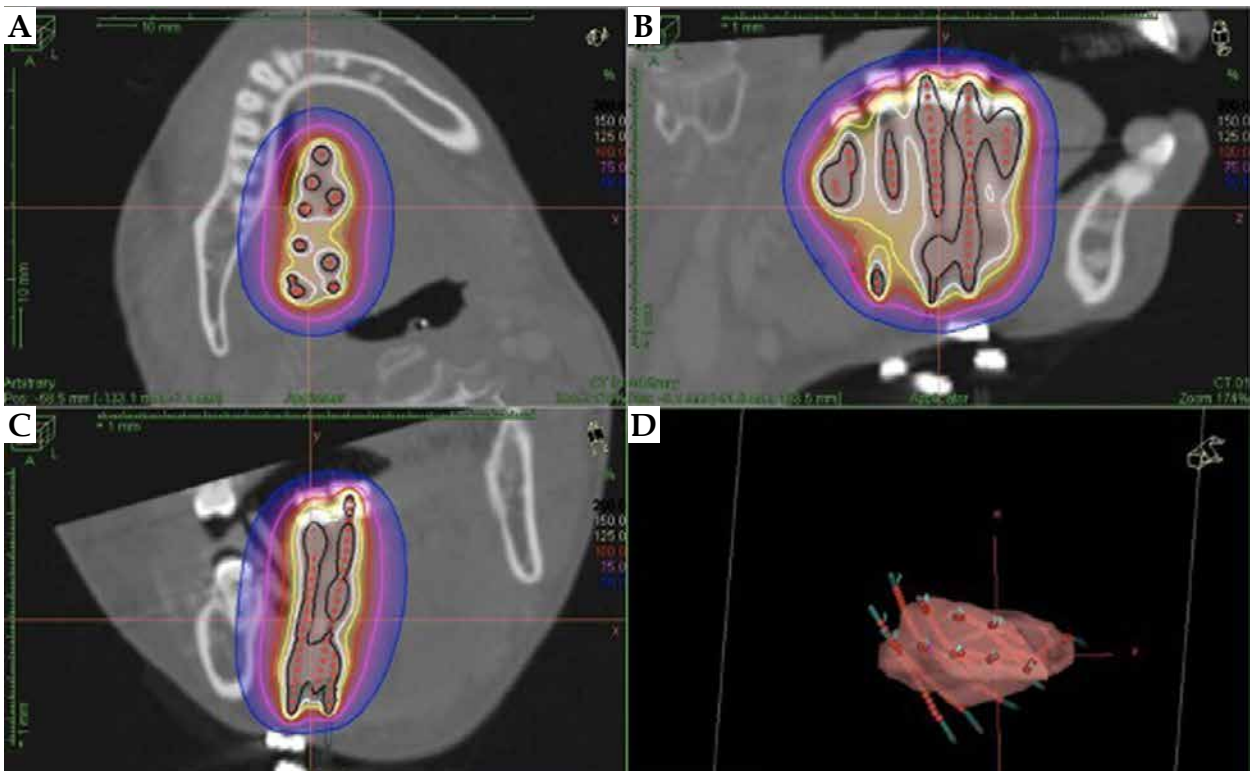


Fig. 3. Dose-distribution diagram for high-dose-rate interstitial brachytherapy. Axial (A), sagittal (B), and coronal (C) sections showing dose distribution profile. A three-dimensional rendering image showing position of 10 flexible applicator tubes in relation to planning target volume (D)

to be very reliable, as it includes histopathological findings. The present case was classified as having an A2 reliability level, with a latency period of five years, which is consistent with the definition put forward by Sakai *et al.* Other studies have adopted the criteria for osteosarcoma presented by Cahan *et al.* [12] (widely used for the diagnosis of a radiation-induced sarcoma) and described a latency period of two years [6, 7]. In the present case, the latent period was five years and one month, which is also consistent with the definition. The patient's initial malignancy was a SCC. Following radiation therapy, a pseudo-tumor was detected with no evidence of malignancy.

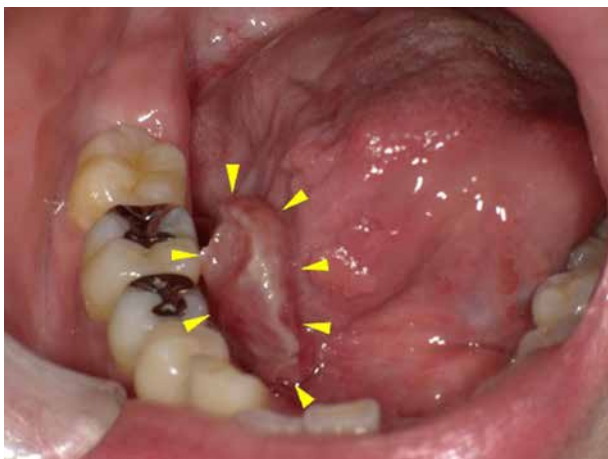


Fig. 4. Clinical photograph three years and one month after completion of radiation therapy

Considering that undifferentiated spindle cell sarcoma is a rare disease, it seems appropriate to conclude that it was induced by radiation therapy in the present patient.

A radiation-induced pseudo-tumor develops earlier than sarcoma, with a median latent period of 79 months [13]. Although both sarcoma and a pseudo-tumor can be

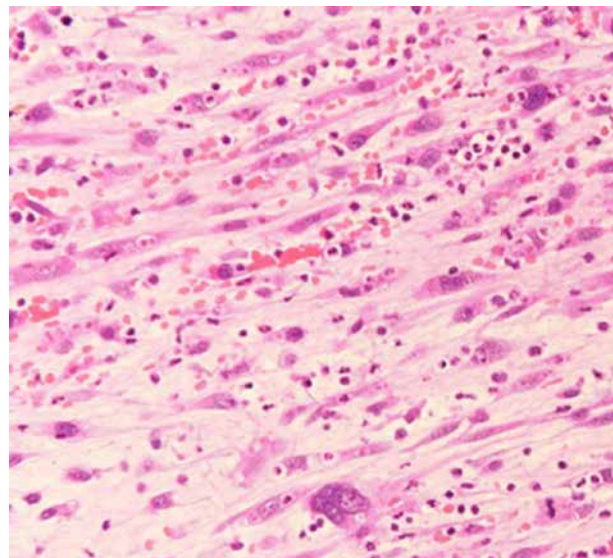


Fig. 5. Histologic image. The mass shows spindle-shaped atypical cells with enlarged and densely stained nucleus proliferation, accompanied by neutrophil-dominated inflammatory cell infiltration (HE stain, 200x)

Table 1. Diagnostic reliability of radiation-induced malignancies according to Sakai *et al.* [8] (partially modified)

Confidence factor	Criteria (except for leukemia)			
	Histopathological type	Organ of origin	Latency period	Site of origin
A (high)	1	Different	Different	> 5 years
	2		Same	
B (medium)	1	Same	Different (non-continuous)	Within irradiated area
	2		Different (continuous)	
C (low)	1	Same	Same (non-continuous)	
	2		Same (continuous)	

tion therapy for oral SCC, a radiation-induced pseudo-tumor is considered to be a rare complication, with a prevalence of only 0.02% [13].

Conclusions

Here, we report a case of a suspected radiation-induced malignancy occurring at the site of HDR-ISBT performed for tongue SCC.

Disclosure

The authors report no conflict of interest.

References

1. NCCN Clinical Practice Guidelines in Oncology Head and Neck cancers version 1.2022. 2021. Available online: <https://www.nccn.org> (accessed on 21th February 2022).
2. Akiyama H, Yoshida K, Shimizutani K et al. Dose reduction trial from 60 Gy in 10 fractions to 54 Gy in 9 fractions schedule in high-dose-rate interstitial brachytherapy for early oral tongue cancer. *J Radiat Res* 2012; 53: 722-726.
3. Yamazaki H, Inoue T, Yoshida K et al. Brachytherapy for early oral tongue cancer: low dose rate to high dose rate. *J Radiat Res* 2003; 44: 37-40.
4. Hall EJ, Giaccia AJ. Radiobiology for the radiologist. 7th ed. Lippincott Williams & Wilkins, Philadelphia 2012.
5. Coca-Pelaz A, Mäkitie AA, Strojjan P et al. Radiation-induced sarcomas of the head and neck: a systematic review. *Adv Ther* 2020; 38: 90-108.
6. Bjerkehagen B, Smeland S, Walberg L et al. Radiation-induced sarcoma: 25-year experience from the Norwegian Radium Hospital. *Acta Oncol* 2008; 47: 1475-1482.
7. Brady MS. Radiation-associated sarcoma of bone and soft tissue. *Arch Surg* 1992; 127: 1379-1385.
8. Sakai K, Hinata H, Kitamura T et al. A survey on radiation-induced cancer following radiotherapy in Japan. *J Japan Radiol Soc* 1981; 41: 24-32 (in Japanese).
9. Makimoto Y, Yamamoto S, Takano H et al. Imaging findings of radiation-induced sarcoma of the head and neck. *Br J Radiol* 2007; 80: 790-797.
10. Amemiya K, Shibuya H, Yoshimura R et al. The risk of radiation-induced cancer in patients with squamous cell carcinoma of the head and neck and its results of treatment. *Br J Radiol* 2005; 78: 1028-1033.
11. Warren S, Gates O. Multiple primary malignant tumours: a survey of the literature and a statistical study. *Am J Cancer* 1932; 16: 1358-1414.
12. Cahan WG, Woodard HQ, Higinbotham NL et al. Sarcoma arising in irradiated bone. *Cancer* 1998; 82: 8-34.
13. Oota S, Shibuya H, Hamagaki M et al. Oral pseudotumor. *Cancer* 2003; 97: 1353-1357.
14. Miyoshi T, Takebayashi S, Suzuki C et al. Early-onset post-irradiation sarcoma of the tongue after pseudotumor phase. *ORL J Otorhinolaryngol Relat Spec* 2011; 73: 201-205.
15. Sakai K, Kitamura T, Hinata H. Second cancers following radiotherapy for malignant tumors the second mail survey in Japan. *J Japan Radiol Soc* 1986; 46: 811-818 (in Japanese).