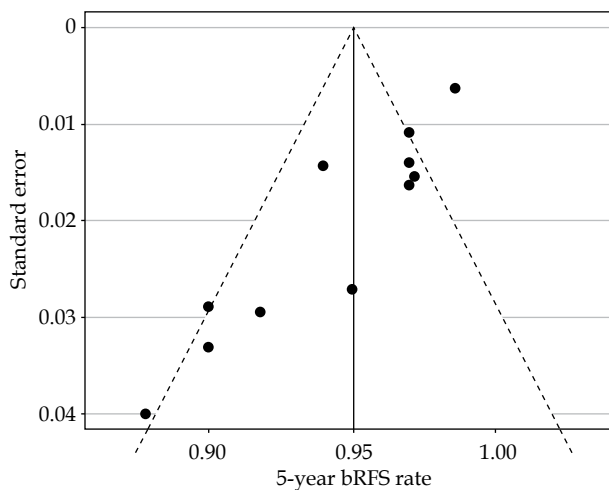
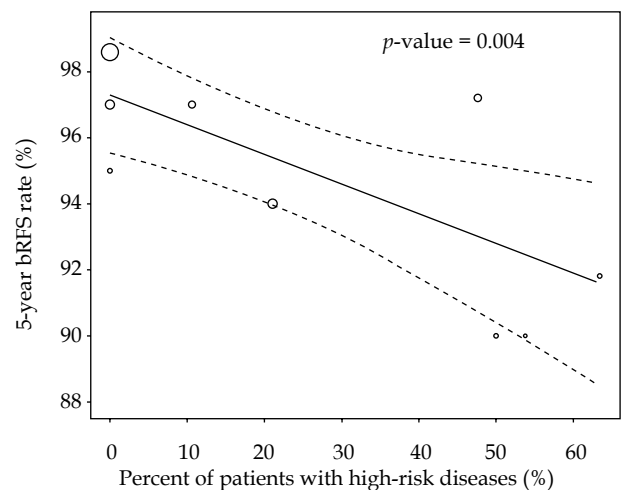


From: Moher D, Liberati A, Tetzlaff J, Altman DG. The PRISMA Group (2009). Preferred reporting items for systematic reviews and meta-analyses The PRISMA statement. *PLoS Med* 6(7): e1000097. doi: 10.1371/journal.pmed1000097
 For more information, visit www.pivna-statement.org

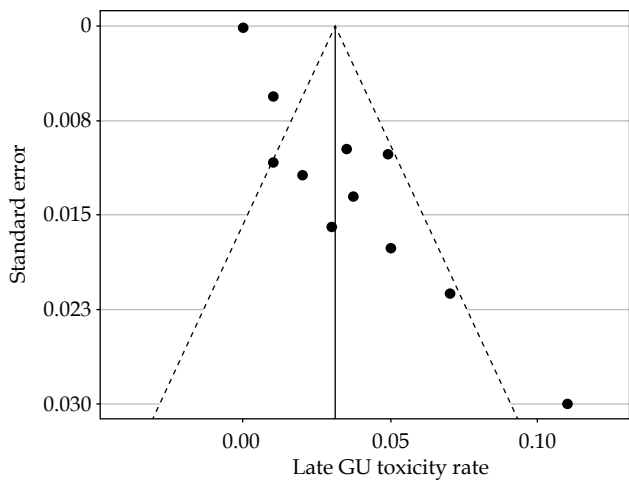
Supplemental Fig. 1. Preferred reporting items for systematic review and meta-analyses (PRISMA) flow diagram



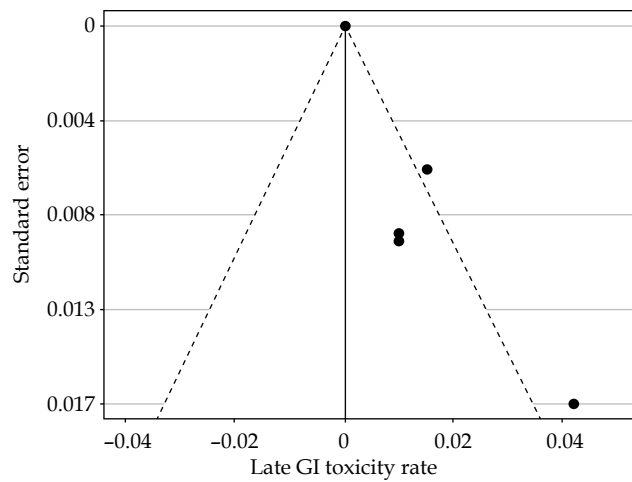
Supplemental Fig. 2. Funnel plot of estimated 5-year biochemical recurrence-free survival (bRFS) rates based on random-effects model against corresponding standard errors indicating publication bias (Egger's test p -value < 0.001). The adjusted pooled 5-year bRFS rate after controlling for publication bias was 0.96% (95% CI: 0.94-0.99%, p -value < 0.001)



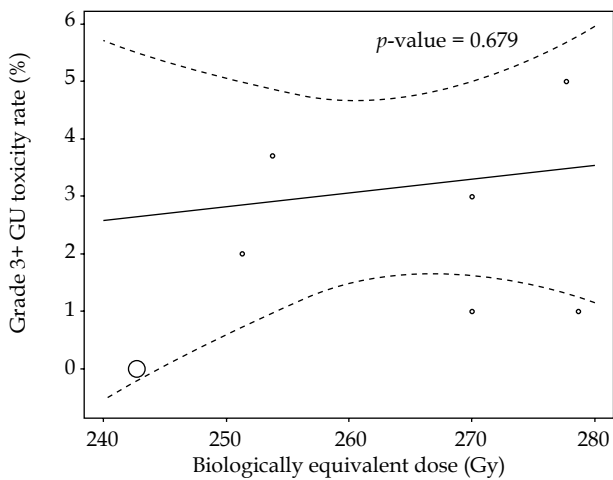
Supplemental Fig. 3. 5-year biochemical recurrence-free survival (bRFS) rates with corresponding 95% confidence intervals. 5-year bRFS rates were associated inversely with the percentage of patients with high-risk disease within each study (p -value = 0.004). Of note, the data from Hauswald *et al.* included in this figure were for 6-year bRFS rather than 5-year bRFS, as was reported for all other studies



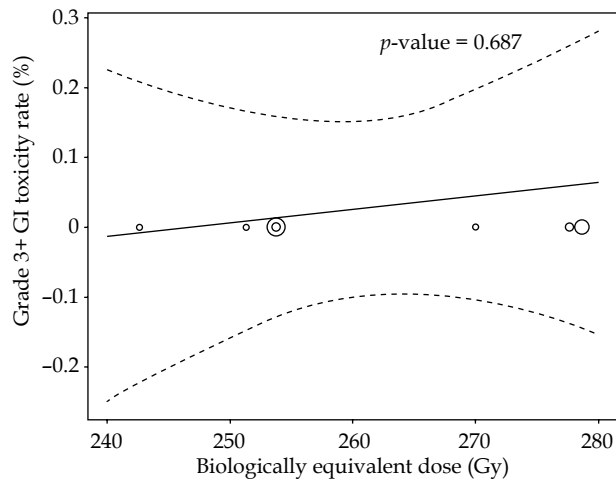
Supplemental Fig. 4. Funnel plot of estimated late grade ≥ 3 genitourinary (GU) toxicity rate based on random-effects model against corresponding standard errors indicating publication (Egger's test p -value < 0.001). The adjusted pooled late grade ≥ 3 GU toxicity rate after controlling for publication bias was 0.02% (95% CI: 0.01-0.04%, p -value = 0.008)



Supplemental Fig. 5. Funnel plot of estimated late grade ≥ 3 gastrointestinal (GI) toxicity rate based on random-effects model against corresponding standard errors indicating publication bias (Egger's test p -value = 0.005). The adjusted pooled late grade ≥ 3 genitourinary (GU) toxicity rate after controlling for publication bias was 0.003% (95% CI: -0.006-0.011%, p -value = 0.539)



Supplemental Fig. 6. Late grade ≥ 3 genitourinary (GU) toxicity rates with corresponding 95% confidence intervals. Late grade ≥ 3 GU toxicity rates were not associated with biologically equivalent dose assuming α/β ratio of 1.5 (p -value = 0.679)



Supplemental Fig. 7. Late grade ≥ 3 gastrointestinal (GI) toxicity rates with corresponding 95% confidence intervals. Late grade ≥ 3 GI toxicity rates were not associated with biologically equivalent dose assuming α/β ratio of 1.5 (p -value = 0.687)